

SINOTRUK

We aim at customers satisfaction.

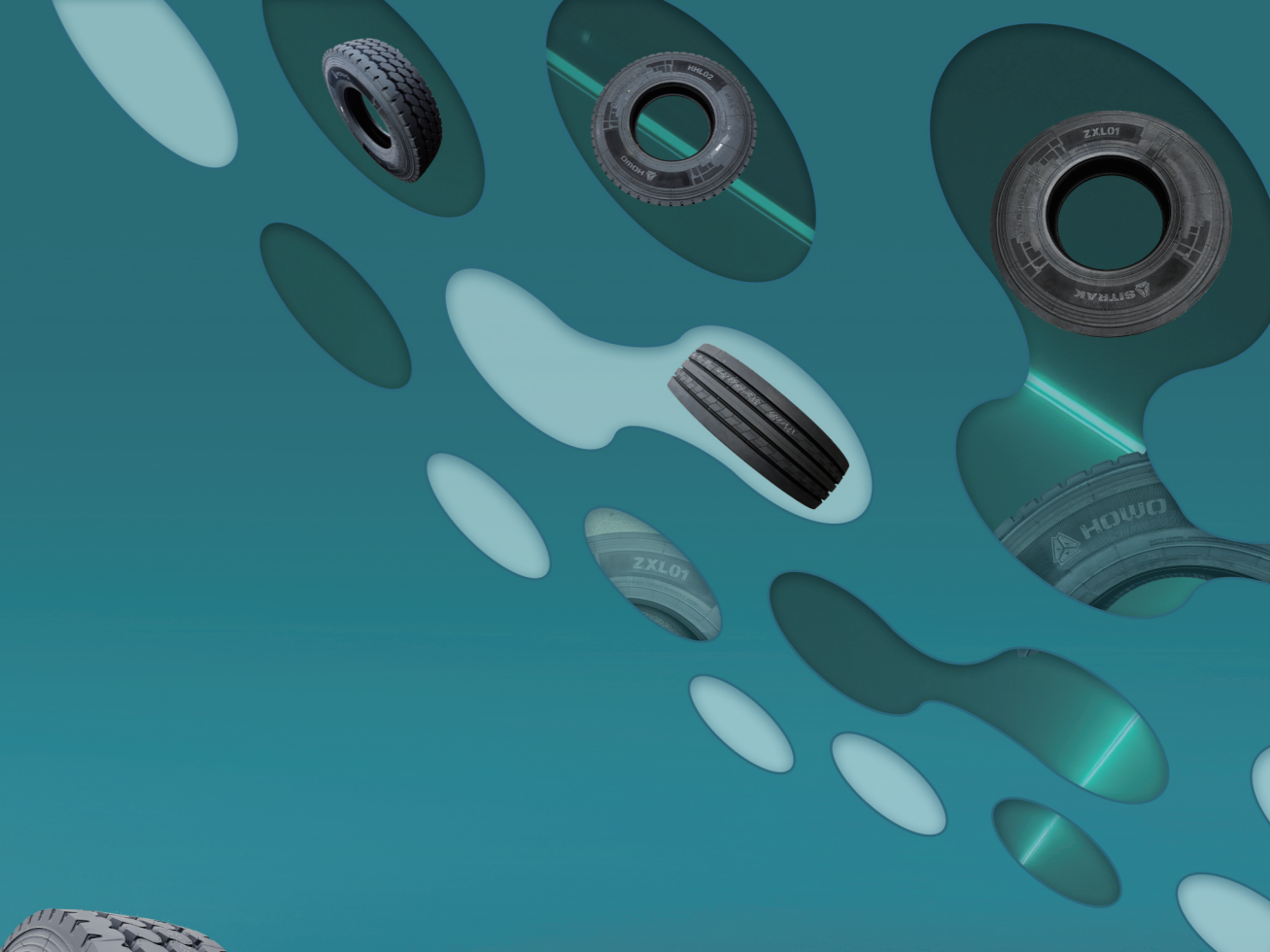
SINOTRUK INTERNATIONAL LTD.

Add: No. 777 Hua'ao Road, Innovation Zone, Jinan, 250001, Shandong Province, P. R. China

Tel: +86 531 58062933 +86 531 58062935



SITRAK/HOWO TIRE CATALOGUE



Part No.	Size	Ply Rating	Pattern	Load Index	Speed Symbol	Standard Rim	Tire Weight (kg)	Tread Width (mm)	Section Width (mm)	Overall Diameter (mm)	Tread Depth (mm)	Rated Load (kg) Single Dual	Rated Pressure (kPa) Single Dual
AZ000061000214	12.00R20	18PR	Mixed pattern	154/151	K	8.5	86.6	236	309	1115	16.5	3750/3450	830/830
AZ000061000216	12.00R20	20PR	Mixed pattern	156/153	K	8.5	86.6	236	309	1115	16.5	4000/3650	900/900
AZ000061000215	12.00R20	18PR	Mixed block	154/151	G	8.5	94.8	250	309	1126	22	3750/3450	830/830
AZ000061000217	12.00R20	20PR	Mixed block	156/153	G	8.5	94.8	250	309	1126	22	4000/3650	900/900
AZ000061000218	315/80R22.5	18PR	Mixed pattern	154/151	K	9	67.5	262	310	1079	18	3750/3450	830/830
AZ000061000221	315/80R22.5	20PR	Mixed pattern	157/154	K	9	67.5	262	310	1079	18	4125/3750	900/900
AZ000061000219	315/80R22.5	18PR	Block pattern	154/151	K	9	73.78	266	312	1082	23	3750/3450	830/830
AZ000061000222	315/80R22.5	20PR	Block pattern	157/154	K	9	73.78	266	312	1082	23	4125/3750	900/900
AZ000061000220	315/80R22.5	18PR	Rib pattern	154/151	K	9	67.28	260	312	1076	16	3750/3450	830/830
AZ000061000223	315/80R22.5	20PR	Rib pattern	157/154	K	9	67.28	260	312	1076	16	4125/3750	900/900
AZ000061000224	13R22.5	18PR	Mixed pattern	154/151	K	9.75	73.16	238	320	1124	17.5	3750/3450	830/830
AZ000061000225	13R22.5	20PR	Mixed pattern	156/153	J	9.75	73.16	238	320	1124	17.5	4000/3650	900/900
AZ000061000229	13R22.5	18PR	Block pattern	154/150	K	9.75	73	254	320	1124	21	3750/3350	850/850
AZ000061000230	13R22.5	20PR	Block pattern	156/150	G	9.75	73	254	320	1124	21	4000/3350	875/875

12.00R20 - Mixed pattern



Product advantages:

- ◆ Extra-strong carcass and bead design to enhance the tire's impact resistance and load-carrying capacity.
- ◆ New 4+0 reinforced structure design with a specialized tread compound to improve load-bearing durability.
- ◆ Uniform footprint technology and a deformation-resistant tread construction effectively prevent irregular wear, reduce ineffective abrasion, and extend service life.
- ◆ Zigzag groove design improves braking safety and enhances grip.
- ◆ Open shoulder design provides both heat dissipation and prevention of irregular wear.



Recommended wheel position: All position



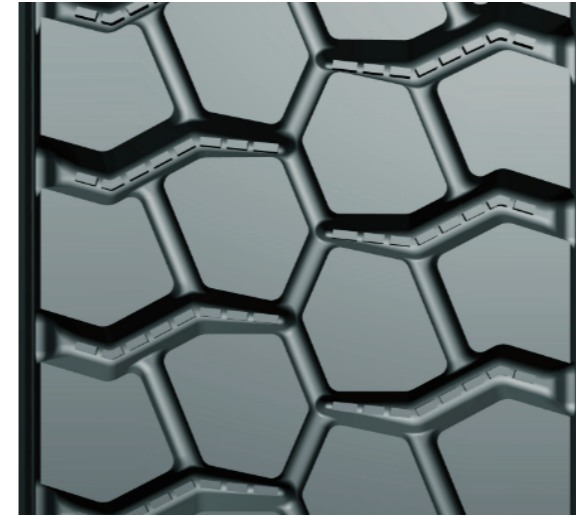
Paved roads



Mixed road surfaces

Size	Ply Rating	Load Index	Speed Symbol	Standard Rim	Tire Weight (kg)	Tread Width (mm)	Section Width (mm)	Overall Diameter (mm)	Tread Depth (mm)	Rated Load (kg) Single/Dual	Rated Pressure (kPa) Single/Dual
12.00R20	18PR	154/151	K	8.5	86.6	236	309	1115	16.5	3750/3450	830/830
12.00R20	20PR	156/153	K	8.5	86.6	236	309	1115	16.5	4000/3650	900/900

12.00R20 - Mixed block



Product advantages:

- ◆ Extra-strong carcass and bead design to enhance the tire's impact resistance and load-carrying capacity.
- ◆ Widened running surface and deepened groove design to improve mileage.
- ◆ Transversely integrated tread block design to enhance tear, cut, and impact resistance.
- ◆ Wide and deep groove design to provide powerful traction.
- ◆ Stone ejector design at the groove bottom to effectively resolve stone trapping issues.
- ◆ New 4+0 reinforced structure design with a specialized tread compound to improve load-bearing durability.



Recommended wheel position: Drive wheel position



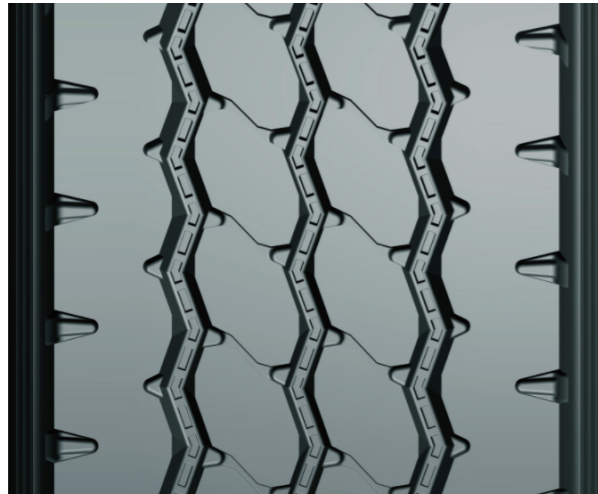
Paved roads



Construction site

Size	Ply Rating	Load Index	Speed Symbol	Standard Rim	Tire Weight (kg)	Tread Width (mm)	Section Width (mm)	Overall Diameter (mm)	Tread Depth (mm)	Rated Load (kg) Single/Dual	Rated Pressure (kPa) Single/Dual
12.00R20	18PR	154/151	G	8.5	94.8	250	309	1126	22	3750/3450	830/830
12.00R20	20PR	156/153	G	8.5	94.8	250	309	1126	22	4000/3650	900/900

315/80R22.5 - Mixed pattern



Product advantages:

- ◆ Reinforced product structure design to improve the product's load-carrying capacity.
- ◆ Transverse open shoulder design to enhance heat dissipation at the shoulder.
- ◆ Uniform footprint technology and a deformation-resistant tread construction effectively prevent irregular wear, reduce ineffective abrasion, and extend service life.
- ◆ Zigzag groove design improves braking safety and enhances grip.
- ◆ Stone ejector design at the groove bottom to prevent stone damage and cracking at the groove base.



Recommended wheel position: All position

Paved roads

Mixed road surfaces

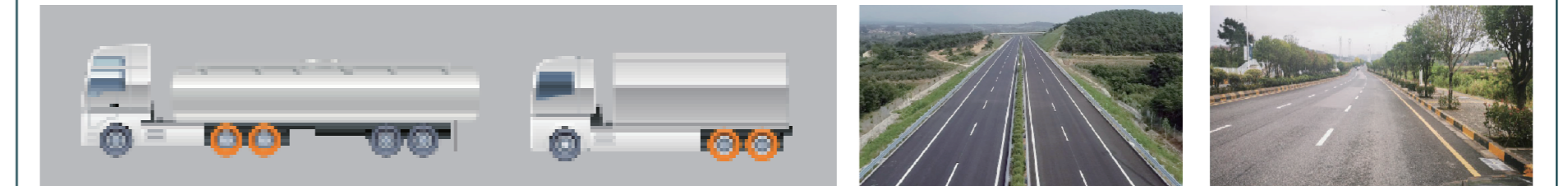
Size	Ply Rating	Load Index	Speed Symbol	Standard Rim	Tire Weight (kg)	Tread Width (mm)	Section Width (mm)	Overall Diameter (mm)	Tread Depth (mm)	Rated Load (kg) Single/Dual	Rated Pressure (kPa) Single/Dual
315/80R22.5	18PR	154/151	K	9.00	67.5	262	310	1079	18	3750/3450	830/830
315/80R22.5	20PR	157/154	K	9.00	67.5	262	310	1079	18	4125/3750	900/900

315/80R22.5 - Block pattern



Product advantages:

- ◆ Extra-strong carcass and bead design to improve load-carrying capacity.
- ◆ Widened running surface and deepened groove design to improve mileage.
- ◆ Optimized inflation profile for a uniform tread footprint, reducing the chance of irregular wear.
- ◆ Tie-bars connecting tread blocks to enhance overall rigidity and reduce the chance of heel-and-toe wear.
- ◆ Directional block pattern design to enhance grip.
- ◆ Low rolling noise provides a more comfortable driving experience.



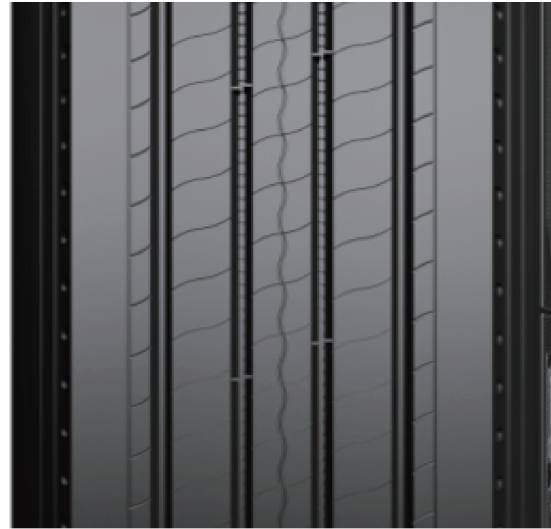
Recommended wheel position: Drive wheel position

Highways

Paved roads

Size	Ply Rating	Load Index	Speed Symbol	Standard Rim	Tire Weight (kg)	Tread Width (mm)	Section Width (mm)	Overall Diameter (mm)	Tread Depth (mm)	Rated Load (kg) Single/Dual	Rated Pressure (kPa) Single/Dual
315/80R22.5	18PR	154/151	K	9.00	73.78	266	312	1082	23	3750/3450	830/830
315/80R22.5	20PR	157/154	K	9.00	73.78	266	312	1082	23	4125/3750	900/900

315/80R22.5 - Rib pattern



Product advantages:

- ◆ Extra-strong carcass and bead design to improve load-carrying capacity.
- ◆ Wear-resistant tread compound to improve mileage.
- ◆ Optimized inflation profile for even tread contact and reduced irregular wear.
- ◆ Stone ejectors at the groove bottom reduce the chance of stone trapping.
- ◆ Fine sipes on the pattern blocks enhance water drainage.
- ◆ Low rolling noise provides a more comfortable driving experience.



Recommended wheel position:Steer position



Highways



Paved roads

Size	Ply Rating	Load Index	Speed Symbol	Standard Rim	Tire Weight (kg)	Tread Width (mm)	Section Width (mm)	Overall Diameter (mm)	Tread Depth (mm)	Rated Load (kg) Single/Dual	Rated Pressure (kPa) Single/Dual
315/80R22.5	18PR	154/151	K	9.00	67.28	260	312	1076	16	3750/3450	830/830
315/80R22.5	20PR	157/154	K	9.00	67.28	260	312	1076	16	4125/3750	900/900

13R22.5 - All-position pattern



Product advantages:

- ◆ Extra-strong carcass and bead design to improve load-carrying capacity.
- ◆ Unique patented bead design increases burst resistance by 30%.
- ◆ S-shaped groove design enhances tire grip and traction.
- ◆ Streamlined groove design prevents stone trapping.
- ◆ Trapezoidal slots on the shoulder improve heat dissipation and extend service life.



Recommended wheel position:All position



Paved roads



Mixed road surfaces

Size	Ply Rating	Load Index	Speed Symbol	Standard Rim	Tire Weight (kg)	Tread Width (mm)	Section Width (mm)	Overall Diameter (mm)	Tread Depth (mm)	Rated Load (kg) Single/Dual	Rated Pressure (kPa) Single/Dual
13R22.5	18PR	154/151	K	9.75	73.16	238	320	1124	17.5	3750/3450	830/830
13R22.5	20PR	156/153	J	9.75	73.16	238	320	1124	17.5	4000/3650	900/900

13R22.5 - Block pattern



Product advantages:

- ◆ Reinforced product structure design to improve the product's load-carrying capacity.
- ◆ Wider running surface and deeper grooves improve wear resistance.
- ◆ The large block pattern ensures heat dissipation and provides powerful traction during driving.
- ◆ Tie bars between pattern blocks enhance overall rigidity and reduce irregular wear.
- ◆ Specialized mining tread compound provides excellent puncture and wear resistance.



Recommended wheel position: Drive wheel position



Soft mining area pavement



Poor unpaved road surface

Size	Ply Rating	Load Index	Speed Symbol	Standard Rim	Tire Weight (kg)	Tread Width (mm)	Section Width (mm)	Overall Diameter (mm)	Tread Depth (mm)	Rated Load (kg) Single/Dual	Rated Pressure (kPa) Single/Dual
13R22.5	18PR	154/150	K	9.75	73	254	320	1124	21	3750/3350	850/850
13R22.5	20PR	156/150	G	9.75	73	254	320	1124	21	4000/3350	875/875